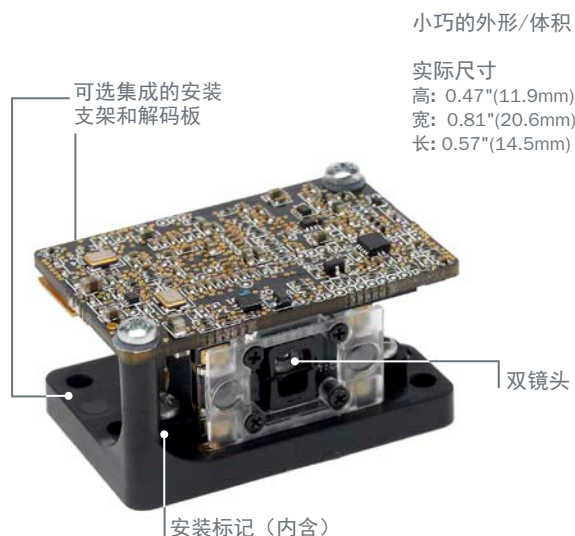


MS-2D

2D 扫描引擎



MS-2D 扫描引擎是一款超紧凑型的条码成像系统，可方便地内置到任何设备中。MS-2D引擎凭借先进的解码技术和内含的双镜头，可准确读取大面积的一维条码和高密度的二维码。

专为内嵌式应用而设计的MS-2D引擎可在极近的距离读取1D/2D码和直接零件标记DPM。

MS-2D扫描引擎：简介

- 超高速微处理器
- 双镜头用于宽视野和高密度读取
- X-Mode技术实现高效解码
- USB 2.0, RS-232 接口可选
- 5V低功率档



ESP® 简易设置程序：单点软件解决方案为所有 Microscan 阅读器提供迅速、简便的设置和配置。

有关本产品的详细信息，请访问 www.microscan.com。

体积小巧&重量轻

MS-2D扫描引擎外观尺寸
39.0 mm 长× 24.9 mm 宽×
7.6 mm 高, 仅重2.8g。

解码性能

MS-2D扫描引擎含有X-Mode解码算法, 可以轻松读取包括直接零件标记的最难读取的条码甚至是破损的条码。

设置简单

ESP软件可调试MS-2D扫描引擎, 包括可选择性地触发和码制设定。

多项设置

MS-2D有多个安装设置选择, 例如标签, 盲孔和安装支架。配置选项包括内置解码板和安装支架, 或者安装了串口解码板的标签。

应用实例

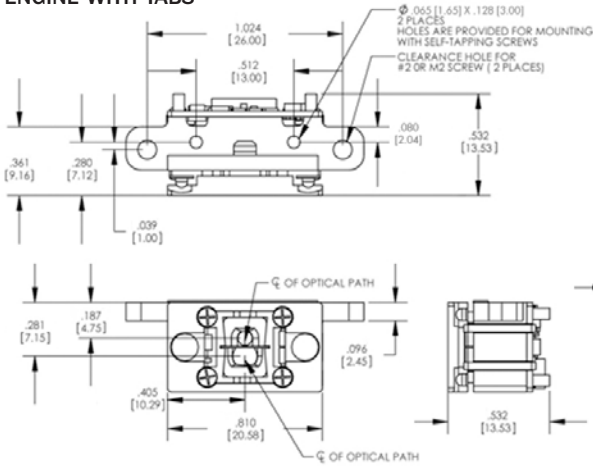
- 临床仪器
- 医疗设备
- 电子组装
- 售票终端和银行ATM

MS-2D扫描引擎：可读码

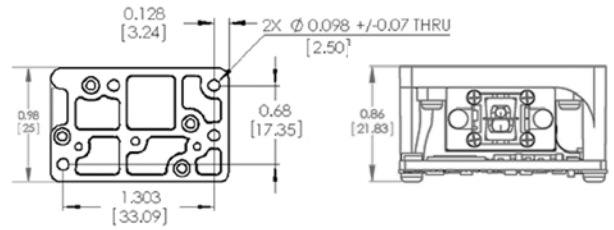


MS-2D ENGINE SPECIFICATIONS AND OPTIONS

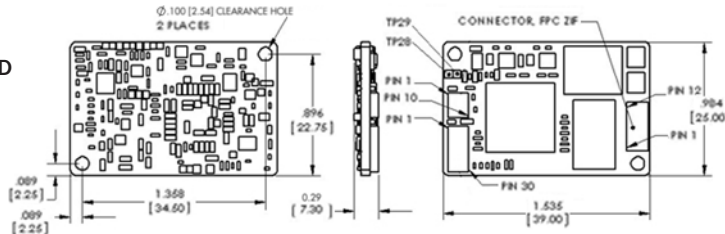
ENGINE WITH TABS



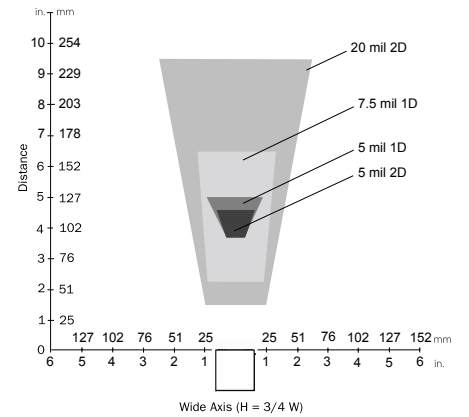
INTEGRATED UNIT



DECODE BOARD



READ RANGE GRAPH



Note: Inches [millimeters]. Nominal dimensions shown. Typical tolerances apply.

MECHANICAL (ENGINE)

Height: 0.47" (11.9 mm)
Width: 0.81" (20.6 mm)
Length: 0.57" (14.5 mm)
Weight (Without Mounting Tabs): 0.09 oz. (2.6 g)

MECHANICAL (DECODE BOARD)

Height: 1.54" (39.0 mm)
Width: 0.98" (24.9 mm)
Length: 0.30" (7.6 mm)
Weight: 0.10 oz. (2.8 g)

MECHANICAL (INTEGRATED UNIT)

Height: 1.54" (39.0 mm)
Width: 0.98" (24.9 mm)
Length: 0.86" (21.8 mm)
Weight: 0.91 oz. (25.7 g)

LIGHT SOURCE

Type: High output red LED illumination
Target Beam: Blue LED

LIGHT COLLECTION OPTIONS

Sensor: CMOS 1.2 Megapixel
Optical Resolution: 960 x 640 pixels, both high density and wide

SCANNING PERFORMANCE

Pitch: ± 60° (from front to back)
Skew: ± 60° from plane parallel to symbol (side-to-side)
Tilt: ± 180°
Print Contrast Resolution: 25% (1D symbologies), 35% (2D symbologies) absolute dark/light reflectance differential, measured at 650 nm

COMMUNICATION

Interface: USB 2.0, RS-232 TTL
Memory: 128MB Flash ROM, 32MB RAM

SYMBOLOGIES

2D Symbologies: Data Matrix (ECC 0-200), QR Code, Micro QR Code, Aztec Code
Stacked Symbologies: PDF417, Micro PDF417, GS1 Databar (Composite & Stacked)
Linear Barcodes: Code 39, Code 128, BC 412, I2 of 5, UPC/EAN, Codabar, Code 93, Pharmacode, PLANET, PostNet, Japanese Post, Australian Post, Royal Mail, Intelligent Mail, KIX

ENVIRONMENTAL CHARACTERISTICS

Operating Temperature: -20° to 55° C (-4° to 131° F)
Storage Temperature: -30° to 65° C (-22° to 150° F)
Relative Humidity: 5% to 95% (non-condensing)
Ambient Light Immunity: Sunlight: Up to 9,000 ft-candles/96,800 lux
Shock: Withstands multiple drops of 6' (1.8 m) to concrete in an enclosed housing

INDICATORS

Symbol Locator: Blue LED targeting beam
Beeper: Good read

ELECTRICAL

Power: 5 VDC
Typical: 303 mA **Idle:** 57 mA **Sleep:** 1.6 mA

CE STANDARDS

Emissions: EN 55022:2006 Class B Limits; ICES-003
LED Safety: EN 60825-1: 1994+A1+A2 Class 1

READ RANGE TABLE

Narrow-Bar	Read Range
STANDARD DENSITY	
1D	
.0050" (.127 mm)	3.7 to 5.0" (94 to 127 mm)
.0075" (.191 mm)	2.2 to 6.5" (56 to 165 mm)
.010" (.254 mm)	1.5 to 8.0" (38 to 203 mm)
.020" (.508 mm)	2.3 to 15.5" (58 to 394 mm)
2D	
.0050" (.127 mm)	3.7 to 4.6" (94 to 117 mm)
.0075" (.191 mm)	1.5 to 6.0" (38 to 152 mm)
.010" (.254 mm)	1.6 to 7.7" (41 to 196 mm)
.020" (.508 mm)	1.6 to 9.4" (41 to 239 mm)

Note: Specifications are subject to change. Working ranges are a combination of both the wide and high density fields.

SAFETY CERTIFICATIONS DESIGNED FOR FCC, CE

ROHS/WEEE COMPLIANT

ISO CERTIFICATION

Certified ISO 9001:2008 Quality Management System

©2012 Microscan Systems, Inc. SP074FC 05/12

Read Range and other performance data is determined using high quality Grade A symbols per ISO/IEC 15415 and ISO/IEC 15416 in a 25° C environment. For application-specific Read Range results, testing should be performed with symbols used in the actual application. Microscan Applications Engineering is available to assist with evaluations. Results may vary depending on symbol quality. **Warranty**—One year limited warranty on parts and labor.

MICROSCAN®

Microscan Systems, Inc.
 电话: +1 425 226 5700 / 800 251 7711
 传真: +1 425 226 8250

Microscan 亚太区总部
 电话: +65 6846 1214
 传真: +65 6846 4641
Microscan 上海
 电话: +86 21 61133752 / 传真: +86 21 61133683
Microscan 广州
 电话: +86 20 28873807 / 传真: +86 20 28873848
Microscan 北京
 电话: +86 10 59935887 / 传真: +86 10 59935999

www.microscan.com
产品信息:
 info@microscan.com
自动识别支持:
 helpdesk@microscan.com